



# Hillsboro CERT: ACT 2

---

## *Exercise Overview*

### **Overview:**

Integrate CERT and Amateur radio communications in a simulated disaster with loss of telephone communications.

### **Objectives:**

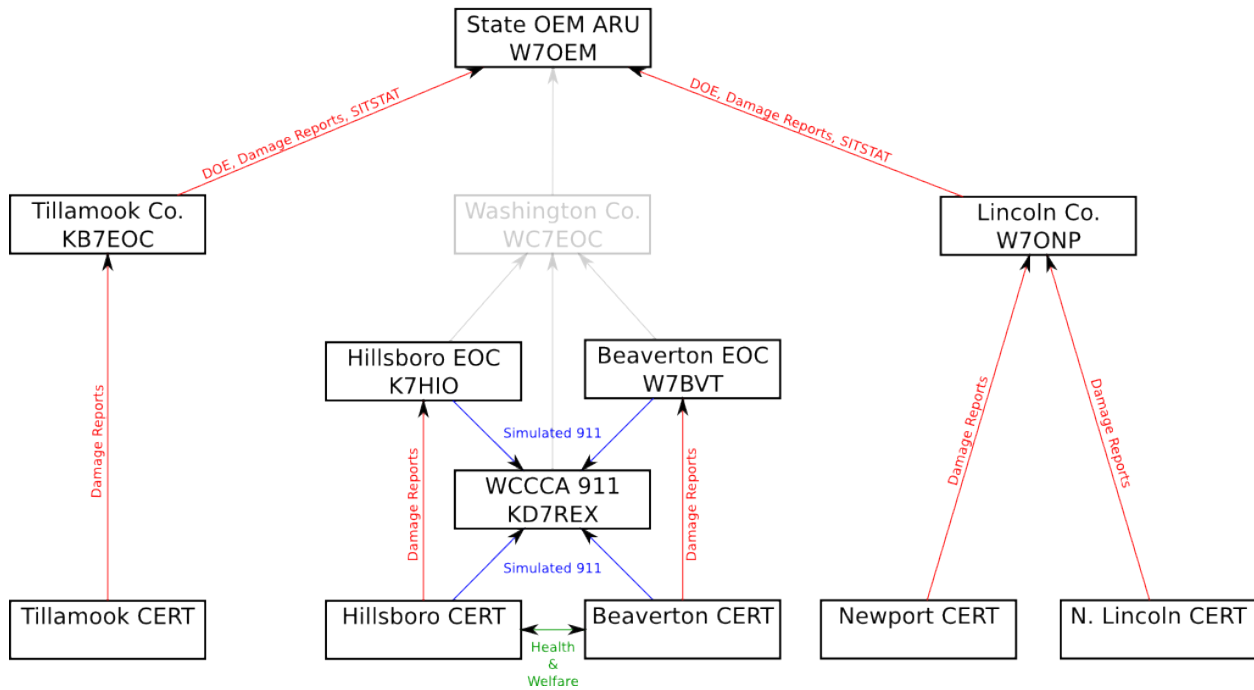
1. Navigate an unfamiliar neighborhood using FRS radios for local communication.
2. To relay damage assessments over FRS and ham radio to the city EOC
3. To relay 911 calls over FRS and ham radio to the county 911 center
4. To relay health and welfare messages from affected residents to contacts in other areas

### **Participants:**

- Hillsboro CERT
- Beaverton CERT
- Tillamook CERT
- Newport CERT
- North Lincoln CERT
- Hillsboro EOC
- Beaverton EOC

- Lincoln County EOC
- Tillamook County EOC
- Washington County Consolidated Communications Agency (WCCCA 911)
- Oregon Emergency Management

### Oregon ACES ACT 2 - Approximate Traffic Flow



## **What to Bring:**

- Water
- Snacks
- Sunscreen
- Hat
- Shoes
- FRS/GMRS radio
- Amateur radio if you are licensed
- Note pad and writing implement
- CERT Vest

## **What to do:**

1. Divide the group and establish a base of operations at the two parks in Orenco Station. Each park must have an amateur radio operator. This will allow communication between bases and the Hillsboro EOC (K7HIO)
2. Develop a communications plan for CERT members using FRS channels 8 – 14
3. Develop plan to size up Orenco Station
4. Perform Damage assessment of Orenco Station providing updates to Hillsboro EOC.
5. Relay 911 calls to WCCCA (KD7REX) on 146.90.
6. After damage assessment is complete develop plan to address problems in area. Relay needs and Hillsboro EOC
7. If Health and Wellness messages are received, deliver those messages.

## Communications Plan

- Contact WCCCA for 911 calls on the 146.90 repeater
- Contact Hillsboro EOC and Beaverton CERT on 147.36 repeater
- Use FRS channels 8-14 for team communication. You will need to develop a team plan

Function	Frequency	Offset	Tone
WCCCA	146.900MHz	-0.600kHz	None
CERT	147.360MHz	+0.600kHz	107.2Hz

